

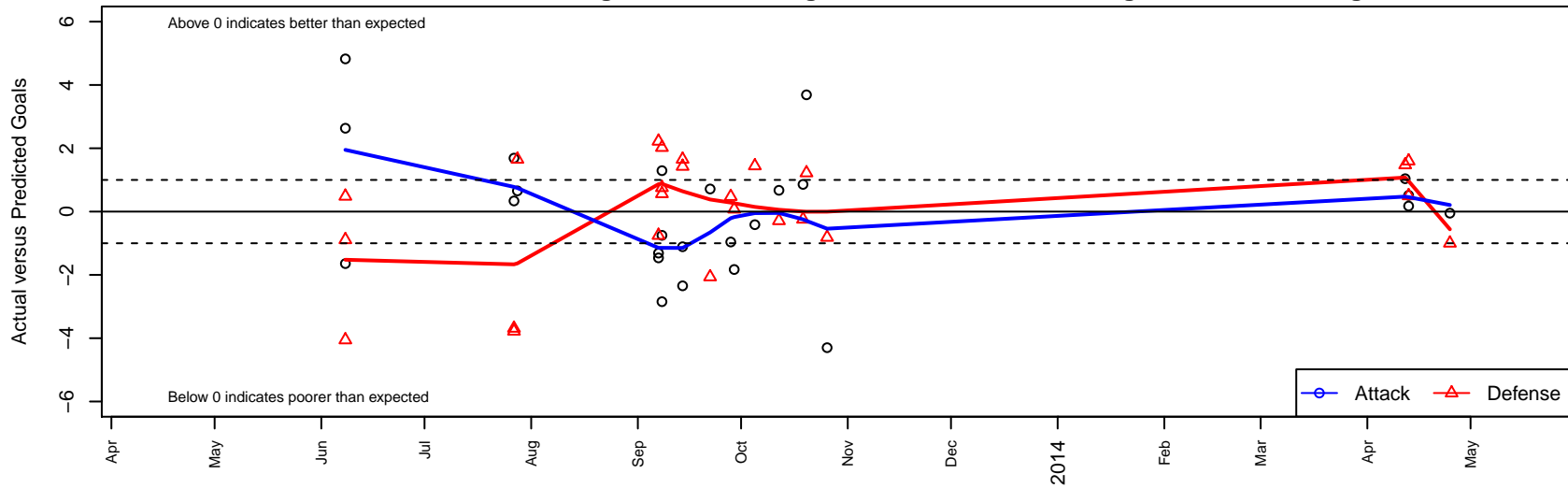
# Washington East SC B02

Washington East SC  
 Spokane, WA  
 B02 total strength=556  
 attack=0.79 defense=0.23  
 fall league = PSPL-Inland Dev Div 1 U11  
 notes= Flannigan 2013  
 alt names used:  
 WASHINGTON EAST (WA)  
 Washington East - Flanigan  
 Washington East SC Flanigan  
 WASHINGTON EAST WE B02 (WA)

Venues played:  
 Sagebush Classic Boys U11 U11  
 River City Cup Boys U-11 Gold U11  
 Pend Oreille Cup BU11  
 PSPL-Inland Dev Div 1 U11  
 WA Cup BU11 Gold/Silver U11



**Washington East SC B02**  
 Dots are actual minus expected GF (blue circles) and GA (red triangles).  
 Blue line is smoothed change in attack strength. Red is smoothed change in defense strength.



|       | <b>date</b> | <b>home</b>                |    | <b>away</b>                     |    | <b>venue</b>                      | <b>pred.home</b> | <b>pred.away</b> |
|-------|-------------|----------------------------|----|---------------------------------|----|-----------------------------------|------------------|------------------|
| 26679 | 2014-04-25  | Seattle Celtic Green B02   | 4  | Washington East SC B02          | 2  | WA Cup BU11 Gold/Silver U11       | 3.00             | 2.050            |
| 26303 | 2014-04-13  | Washington East SC B02     | 4  | Central WA SA Navy B02          | 2  | WA Cup BU11 Gold/Silver U11       | 3.82             | 3.597            |
| 26304 | 2014-04-13  | Wenatchee Fire Black B02   | 3  | Washington East SC B02          | 3  | WA Cup BU11 Gold/Silver U11       | 3.50             | 2.487            |
| 26010 | 2014-04-12  | ASE Emerald Howell B02     | 0  | Washington East SC B02          | 8  | WA Cup BU11 Gold/Silver U11       | 1.48             | 6.961            |
| 15717 | 2013-10-26  | Storm FC Heuett-Nicol B02  | 2  | Washington East SC B02          | 3  | PSPL-Inland Dev Div 1 U11         | 1.19             | 7.299            |
| 15257 | 2013-10-20  | Washington East SC B02     | 7  | Academy Idaho Cads B02          | 2  | PSPL-Inland Dev Div 1 U11         | 3.31             | 3.222            |
| 14773 | 2013-10-19  | Breakers Andersson B02     | 2  | Washington East SC B02          | 4  | PSPL-Inland Dev Div 1 U11         | 1.76             | 3.141            |
| 13733 | 2013-10-12  | Spokane Pumas B02          | 2  | Washington East SC B02          | 7  | PSPL-Inland Dev Div 1 U11         | 1.71             | 6.327            |
| 12690 | 2013-10-05  | Sabers Healy B02           | 1  | Washington East SC B02          | 3  | PSPL-Inland Dev Div 1 U11         | 2.44             | 3.413            |
| 12267 | 2013-09-29  | Washington East SC B02     | 5  | KVJSA Ellensburg FC Vikings B02 | 0  | PSPL-Inland Dev Div 1 U11         | 6.83             | 0.077            |
| 11787 | 2013-09-28  | Washington East SC B02     | 6  | ASE Emerald Howell B02          | 1  | PSPL-Inland Dev Div 1 U11         | 6.96             | 1.475            |
| 11343 | 2013-09-22  | FC Spokane Black Bly B02   | 4  | Washington East SC B02          | 7  | PSPL-Inland Dev Div 1 U11         | 1.94             | 6.286            |
| 9836  | 2013-09-14  | FC Spokane Black Lee B02   | 0  | Washington East SC B02          | 5  | PSPL-Inland Dev Div 1 U11         | 1.65             | 7.345            |
| 9841  | 2013-09-14  | Washington East SC B02     | 5  | Cobra Hooligans B02             | 0  | PSPL-Inland Dev Div 1 U11         | 6.11             | 1.428            |
| 9420  | 2013-09-08  | Lakeland Nighthawks B02    | 0  | Washington East SC B02          | 6  | Pend Oreille Cup BU11             | 0.76             | 8.846            |
| 9422  | 2013-09-08  | Washington East SC B02     | 4  | Sting SC Newcastle B02          | 0  | Pend Oreille Cup BU11             | 4.75             | 2.025            |
| 9423  | 2013-09-08  | Kootenay South Storm 2003B | 2  | Washington East SC B02          | 4  | Pend Oreille Cup BU11             | 2.56             | 2.707            |
| 8893  | 2013-09-07  | Washington East SC B02     | 2  | Academy Idaho Cads B02          | 1  | Pend Oreille Cup BU11             | 3.31             | 3.222            |
| 8897  | 2013-09-07  | Sting SC Sunderland B02    | 3  | Washington East SC B02          | 4  | Pend Oreille Cup BU11             | 2.25             | 5.462            |
| 4961  | 2013-07-28  | Washington East SC B02     | 8  | FC Spokane Black Lee B02        | 0  | River City Cup Boys U-11 Gold U11 | 7.35             | 1.651            |
| 4648  | 2013-07-27  | Washington East SC B02     | 5  | Academy Idaho Cads B02          | 7  | River City Cup Boys U-11 Gold U11 | 3.31             | 3.222            |
| 4650  | 2013-07-27  | Washington East SC B02     | 8  | Cobra Manchester City B02       | 6  | River City Cup Boys U-11 Gold U11 | 7.66             | 2.313            |
| 704   | 2013-06-08  | Washington East SC B02     | 4  | 3 Rivers Black B02              | 10 | Sagebush Classic Boys U11 U11     | 1.37             | 5.946            |
| 706   | 2013-06-08  | Washington East SC B02     | 11 | 3 Rivers Spencer B02            | 3  | Sagebush Classic Boys U11 U11     | 6.18             | 2.110            |
| 708   | 2013-06-08  | Washington East SC B02     | 0  | Cobra Morritos B02              | 3  | Sagebush Classic Boys U11 U11     | 1.64             | 3.483            |